

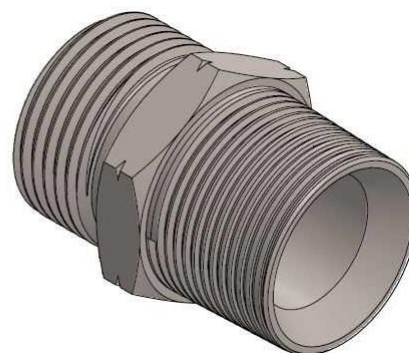
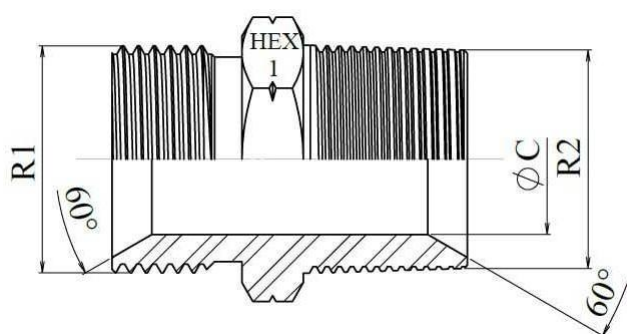


BSP Adaptors

Straight male adaptors

## Adaptor male BSP 60° - male NPT

Stainless Steel AISI 316-L



Part nº	R1	R2	L	HEX 1	ØC	Working Pressure (bar)
<b>SSNB2-2</b>	1/8" BSP	1/8" NPT	23,5	14	3,5	700
<b>SSNB4-4</b>	1/4" BSP	1/4" NPT	30,5	17	6	700
<b>SSNB6-6</b>	3/8" BSP	3/8" NPT	32	19	8	700
<b>SSNB8-8</b>	1/2" BSP	1/2" NPT	41.5	22	11	700
<b>SSNB12-12</b>	3/4" BSP	3/4" NPT	44	27	16	600
<b>SSNB16-16</b>	1" BSP	1" NPT	52	36	22	420
<b>SSNB20-20</b>	1"1/4 BSP	1"1/4 NPT	56	46	28,5	420
<b>SSNB24-24</b>	1"1/2 BSP	1"1/2 NPT	59	50	33	420
<b>SSNB32-32</b>	2" BSP	2" NPT	66	65	46	350